



## WARNING MARKERS



- Marine grade components



- Reduced line loading by design



- Thermally tested



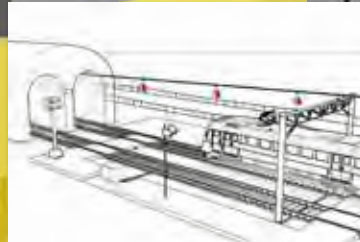
- UV Resistant



- Soft jaw protects cable and prevents creeping. Fits all lines from 2-50mm diameter



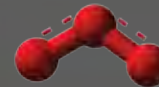
Compliant with AS 3891.2 2018



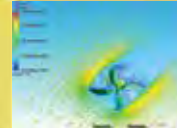
- Dielectric strength tested



- Snow and ice tested



- Ozone tested



- Wind tunnel tested

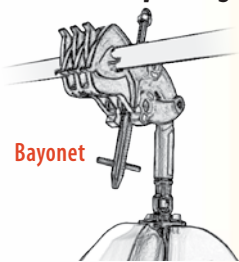


- Aerodynamic 3D design, rotates for high impact visibility from all angles of approach

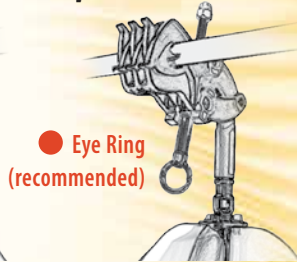


## WARNING MARKERS

Choose Eye Ring or Bayonet

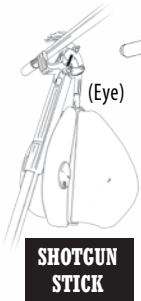


Bayonet

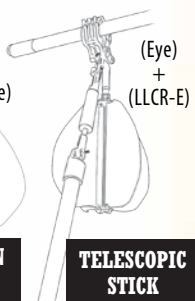


● Eye Ring  
(recommended)

## Installation Options



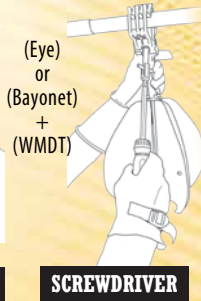
SHOTGUN  
STICK



TELESCOPIC  
STICK



DRIVER



SCREWDRIVER

(Eye)  
+  
(LLCR-E)

(Eye)  
or  
(Bayonet)  
+  
(WMDT)

This is a guide only, consult our Instructions For Use for further details.  
Perform a risk assessment prior to undertaking any work.  
Only to be used by industry certified personnel.  
Must comply with all relevant work practice rules and industry guidelines.

**\*4Nm recommended tightening torque**

**\*\*Image representative only**

## Warning Marker Drive Tool

WMDT | ~42 x 22mm SS (works with Eye or Bayonet)



Can be installed from Bucket Truck  
with Shotgun Stick (Eye version)



## Recommended Products

**ROTAMARKA**  
Install/uninstall  
tool - universal - Eye

LLCR-E | ~300 x 55

\*\*

Can be installed from ground  
with Telescopic Stick and  
LLCR-E Tool (Eye version)





## WARNING MARKERS

**ROTA**MARKA™



Recommended Products



Power line strikes from construction and agricultural plant and equipment are an all too common occurrence, potentially causing serious injury or death.

These incidents can result in major asset damage and power outages.

Our Rotamarka™ has been specifically designed to mitigate against these risks faced by electrical transmission and distribution companies, as well as contractors and industry workers worldwide.



- Designed with science
- Premium reflectors on all fins
- High internal contrast of fins provides better visibility in a range of environmental conditions
- Less markers required on lines
- Highly tested, designed for durability
- Aerodynamic design rotates for high impact visibility
- AS 3891.2 2018 Clause 2.3.1 (d) compliant
- 3D design provides enhanced visibility from all angles of approach



**Recommended Products**

**Warning Marker - Part Number Legend**

**Example :: WM-CS-B-1H-RW**

A B C D E

- A - Product type:** WM (Warning Marker)
- B - Line attachment:** CS (Clamp Screw)
- C - Hot Stick Attachment:** B/E (Bayonet or Eye Ring)

- D - Style of warning device:** 1H/1J (Rotamarka™ Flag )
- E - Colour:** RW/O/BY/BW (Red/White, Orange, Black/Yellow, Black/White)

● WM-CS-E-1H-BW  
WM-CS-B-1H-BW

● WM-CS-E-1H-RW  
WM-CS-B-1H-RW

WM-CS-E-1H-BY  
WM-CS-B-1H-BY

WM-CS-E-1J-O  
WM-CS-B-1J-O

