



LINE GUARDS

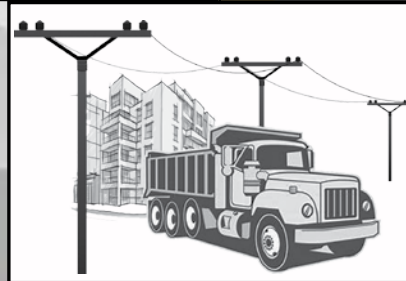
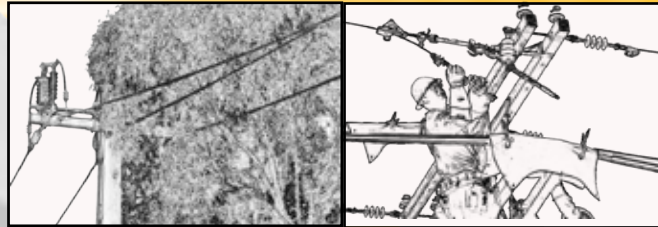
- Unique striped safety feature



- Stamped & rated to comply with Australian and International Standards

- Robust design and construction backed by decades of engineering to ensure the highest quality & safety standards

- Eyelet in bell housing allows locking by cable ties & complies with WHS requirements



- Weather resistant



- LV & HV options available

- Rigid guards or flexible style hose cater for most requirements

- Suitable for use on Power Lines & Wires as visual warning, mechanical protection and electrical insulation





MATS & COVERS



LV HV Testing Services Available

- EPDM Rubber or PVC material options

- Dual colour material safety options available

- Non-slip & flexible Ground Mats

- Weather resistant



Recycling of off-cuts into firehose when possible

- Crease in Class I PVC style covers to conform to line



Velcro



Stud



Magnetic

- Stamped & rated to comply with Australian and International Standards

- Meets ENA & electrical safety rules and guidelines in most States and Territories



MATS & COVERS

LV HV Testing Services Available

Recommended Products

Ground Mats EPDM

- | | |
|--|--|
| 1. 181A-1 1mx1mx6mm Class A 650V Cut-out | 3. 181A-3 1.5mx1mx6mm Class A 650V Slots |
| 181A-2 1.2mx1mx6mm Class A 650V Plain | 181A-4 900x900x6mm Class A 650V Plain |



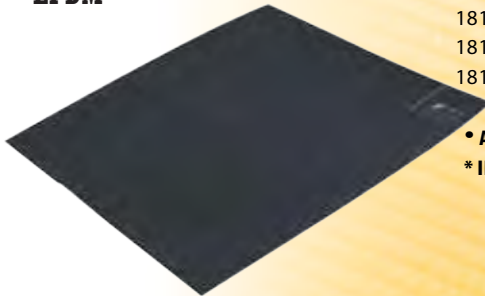
Custom cut-outs
available MOQ's apply

Equipotential Mats

- 181EP-1 | 770x770mm | C/W Bag



Ground Mats 1mx1mx6mm EPDM



- 181A* | Class A | 650V
- 1810* | Class 0 | 1000V
- 1811* | Class 1 | 7.5KV
- 1812* | Class 2 | 17KV
- 1813* | Class 3 | 26.5KV
- 1814* | Class 4 | 36KV

• AS2978
* IEC61111

Ground Mats 10mx1mx6mm EPDM Cut-to-length



- 181A-ROLL* | Class A | 650V
- 1810-ROLL* | Class 0 | 1000V
- 1811-ROLL* | Class 1 | 7.5KV
- 1812-ROLL* | Class 2 | 17KV
- 1813-ROLL* | Class 3 | 26.5KV
- 1814-ROLL* | Class 4 | 36KV

• AS2978 Minimum 900mm cut size
* IEC61111 Minimum 600mm cut size



MATS & COVERS

LV HV Testing Services Available



Recommended Products

Line Covers 650V PVC Magnet/Press Studs AS4202

- 2003 | 1.2mx225mm drop
- 3003 | 1.2mx300mm drop
- 4004 | 1.2mx375mm drop
- 5002 | 1.5mx225mm drop



Line Covers 650V PVC Studs AS4202

- 2001 | 1.2mx225mm drop
- 3001 | 1.2mx300mm drop
- 4001 | 1.2mx375mm drop
- 5001 | 1.5mx225mm drop
- 6001 | 1.8mx225mm drop



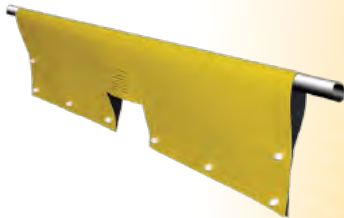
Line Covers 650V EPDM Velcro AS4202

- 2004 | 1.2mx225mm drop
- 2006 | 600x225mm drop
- 2010 | 1mx235mm drop
- 3002 | 1.2mx300mm drop



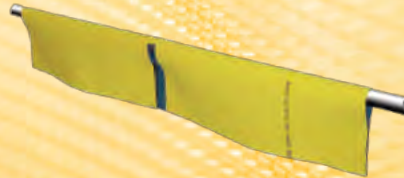
Cross Arm Covers 650V AS4202

- 7001 | 1.2mx375mm drop | PVC Studs
- 7004 | 1.2mx225mm drop | EPDM Velcro
- 7008 | 1.2mx225mm drop | PVC Mag/PStuds
- 7010 | 1mx235mm drop | EPDM Velcro



Comms Cable Covers 650V AS4202

- 7002 | 1.2mx225mm | EPDM Velcro
- 8002 | 600x225mm | PVC Studs
- 8006 | 600x225mm | PVC Mag/PStud



Fuse Link Covers 650V AS4202

- 8001 | 600x375mm drop | PVC Studs
- 8007 | 850x850mm | PVC Plain
- 8010 | 850x700mm | EPDM Velcro
- 8016 | 400x400mm drop | PVC Studs
- 8020 | 600x375mm drop | PVC Mag





LV HV Testing Services Available



Recommended Products

MATS & COVERS

Substation & Switchboard Kits



Clear or Yellow Drapes Available

Available Fasteners:
(Magnetic, Eyelet, Clamps)

- 16002 | (9008) (9007) (9019) (181A) (25006) (26031) (YS-211-3-5)
2 x small plain Drapes, 2 x medium plain Drapes, 1 x large plain Drape,
1 x Ground Mat, 1 x Velcro Strap, 1 x Bag, 4 x Clamps
- 16003 | (10005) (10006) (181A) (25006) (26031)
4 x small magnetic Drapes, 2 x large magnetic Drapes, 1 x Ground Mat,
1 x Velcro Strap, 1 x Bag
- 16004 | (10005) (10021) (26031) (YS-211-3-5)
4 x small magnetic Drapes, 2 x large magnetic Drapes, 1 x Bag, 4 x Clamps
- 16005 | (10005) (10006) (26031)
4 x small magnetic Drapes, 2 x large magnetic Drapes, 1 x Bag
- 16006 | (10029) (10030) (181A) (25006) (26031)
4 x small magnetic Drapes, 2 x large magnetic Drapes, 1 x Ground Mat,
1 x Velcro Strap, 1 x Bag
- 16007 | (10031) (10032) (26031) (YS-211-3-5)
2 x small clear magnetic Drapes, 2 x large clear magnetic Drapes,
4 x Clamps, 1 x Bag

Custom kits available upon application, MOQ's apply

Street Light Column Kits



- 14001 | (23002) (INS-S) (INS-L) (26004)
1 x magnetic Column Cover (pair), 2 x small Inserts, 2 x large Inserts, 1 x Bag
- 14002 | (23002) (INS-S) (INS-L) (181A) (25006) (26031)
1 x magnetic Column Cover (pair), 2 x small Inserts, 2 x large inserts,
1 x Ground Mat, 1 x Velcro Strap, 1 x Bag
- 14003 | (23002) (INS-S) (26004)
1 x magnetic Column Cover (pair), 2 x small Inserts, 1 x Bag

Custom kits available upon application, MOQ's apply



**Images representative only!
+61 2 9482 4000**



MATS & COVERS

LV HV Testing Services Available



Recommended Products

Substation & Switchboard Drapes EPDM 650V



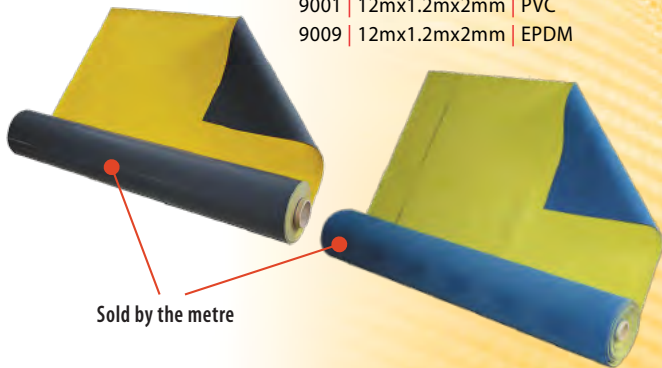
- 9016 | 1mx100mm | plain
- 9017 | 600x300mm | plain
- 9018 | 300x300mm | plain
- 10007 | 300x225mm | eyelets
- 10008 | 450x300mm | eyelets
- 10009 | 600x450mm | eyelets
- 10010 | 900x600mm | eyelets
- 10011 | 1.8mx900mm | eyelets

Substation & Switchboard Drapes PVC 650V



- 8008 | 850x850mm | magnetic
- 9007 | 600x450mm | plain
- 9008 | 400x300mm | plain
- 9019 | 1.2mx900mm | plain
- 10005 | 600x450mm | eyelets/mag
- 10006 | 1.2mx600mm | eyelets/mag
- 10020 | 900x900mm | eyelets
- 10021 | 2mx600mm | magnetic

Substation & Switchboard Drapes 650V Cut-to-length



- 9001 | 12mx1.2mx2mm | PVC
- 9009 | 12mx1.2mx2mm | EPDM

Sold by the metre

Cable End Covers PVC 650V



- 19001 | 180x110mm
- 19002 | 245x190mm
- 19003 | 230x110mm



Image representative only!



MATS & COVERS

Bags PVC - Zipper

- 1. | 26014 | Line Cover Bag | 1.4mx400x100mm
- 2. | 26015 | Ground Mat Bag | 1.1mx150x100mm



Fits up to 5x1.2m long Line Covers



Fits standard 1mx1m Ground Mat

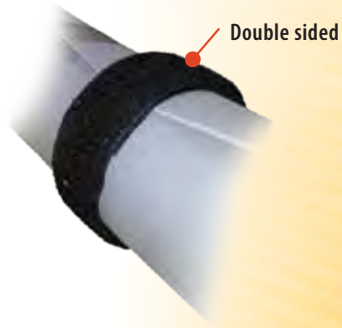
Clamp Polypropylene

YS-211-3-5 | 220x115x22mm



Straps Velcro

- 25005 | 500x50mm
- 25006 | 1mx50mm



Double sided

Studs

1.

**Sold each
not pair**

- 1. | 24003 | Magnet
- 2. | PB4 | Standard Stud
- 3. | PB5 | Male and female Press Stud



2.



3.

