

BIRDFLAPPA™

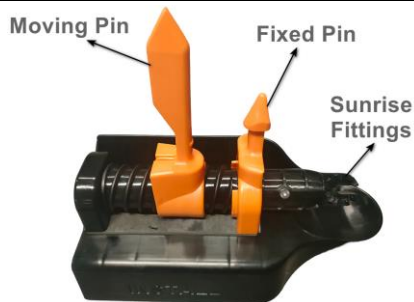
BIRDFLAPPA™ and FLAGMARKA Spring Clamp Products

Screw Install Tool Instructions For Use

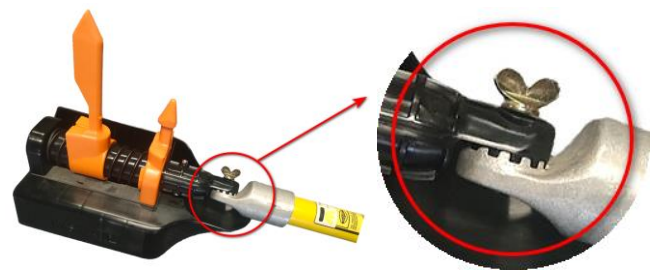
This instruction is applicable for all devices using the **Spring Clamp with the Trigger** assembly

- This product is to be used by authorised industry trained personnel only.
- The use of this product must adhere to appropriate work practises and or industry standards ensuring compliance to all Workplace Health and Safety Regulations.
- This product may only be installed onto an asset when the asset owner has approved of such installation.
- Failure to follow appropriate work practices and operational instructions or modifications to this equipment can result in product damage and or serious injury.
- These instructions are to be read in conjunction with the Balmoral Engineering terms and conditions published on our website.

Step 1 Assemble the Screw Install Tool (LLCR-S) to the Hot Stick



Screw Install Tool, Part No.: LLCR-S

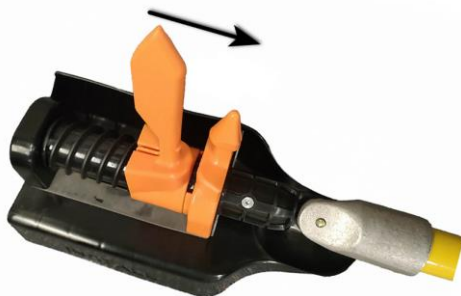


Align the teeth and assemble the Hot Stick onto the Sunrise Fittings.

Step 2 Engage the Devices to the Tool



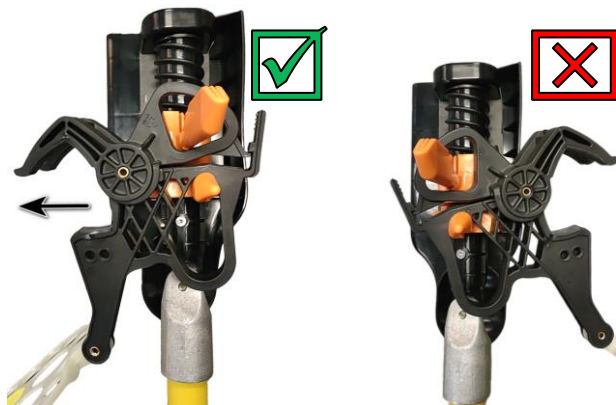
Be aware the Strong Spring, wear protective gloves during the whole process.



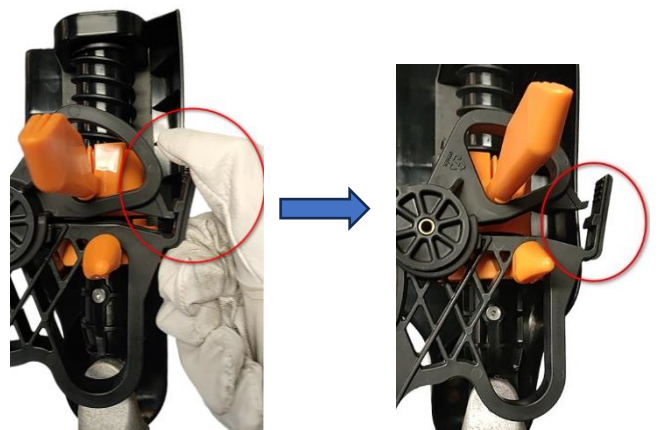
2.1 Adjust the Moving Pin to the bottom contacting with the Fixed Pin.



2.2 Open the device as shown above until the device is locked by the trigger.



2.3 Press the device on to the Tool.
Ensure the clamps' open direction is in the correct orientation, see above left.

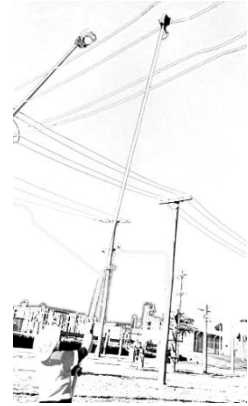


2.4 Release the trigger by pulling trigger as shown in above.

Step 3 Install the Devices to Powerline

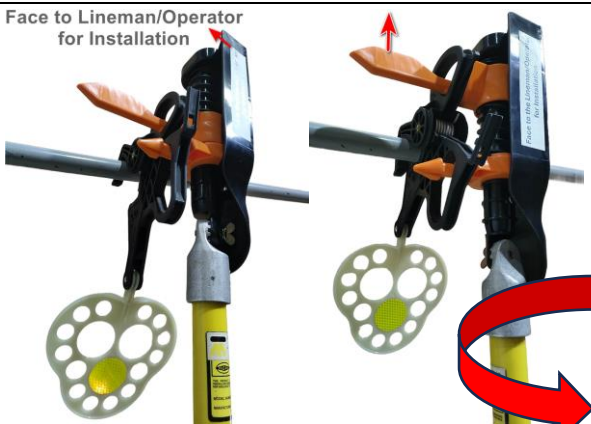


3.1 As shown above, the devices are ready to install on the Powerline.

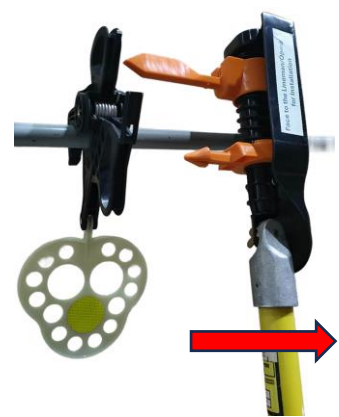


3.2 Check the Label: **Face to Lineman/Operator for Installation**, then slowly raise and lean the Tool on to the Powerline.

Face to Lineman/Operator for Installation



3.3 Rest the top clamp on the Powerline but not pulling it. Turning the Hot Stick to the **Right Hand** direction to release the device onto the Powerline.



3.4 Once the device is clamped on the Powerline, slide the tool towards the right to remove it from the device, installation is complete.

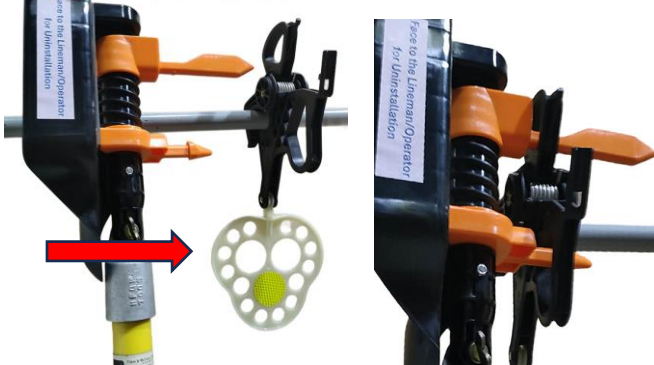
General Spacing Recommendations:

- 1) Space 15-30ft or 5-10m between each marker depending on application*.
- 2) Minimum of 1-2 markers per span*.

**May vary depending on environmental conditions, plus any particular application and engineering considerations.*

Uninstall

Face to Lineman/Operator for Uninstallation



4.1 Check the Label: **Face to Lineman/Operator for Uninstallation**, fully open the tool, then slowly raise and lean the Tool on to the Powerline, slide the two Pins from left side into the device.



4.2 Turning the Hot Stick to **Left Hand** direction to open the device's clamps and remove from the Powerline.

For more product information please visit our website: www.balmoralengineering.com