



CAUTION:

- *This product is to be used by authorised industry trained personnel only.*
- *The use of this product must adhere to appropriate work practises and or industry standards ensuring compliance to all Workplace Health and Safety Regulations.*
- *This product may only be installed onto an asset when the asset owner has approved of such installation.*
- *Failure to follow appropriate work practices and operational instructions or modifications to this equipment can result in product damage and or serious injury.*
- *These instructions are to be read in conjunction with the Balmoral Engineering terms and conditions published on our website.*

1. Assembly Instructions (For ROTAMARKA[™] only series)

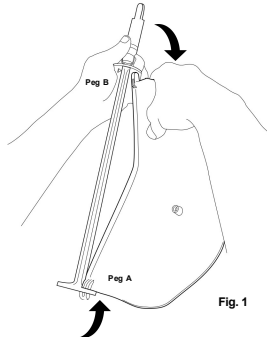


Fig. 1

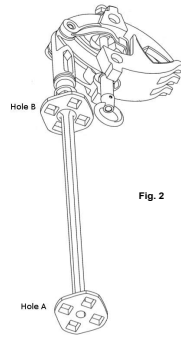


Fig. 2

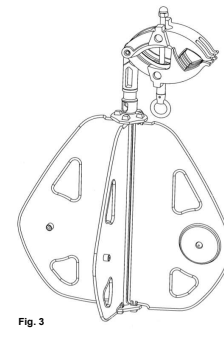
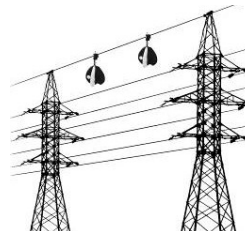


Fig. 3

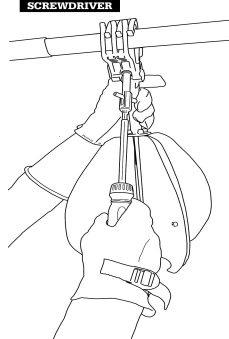
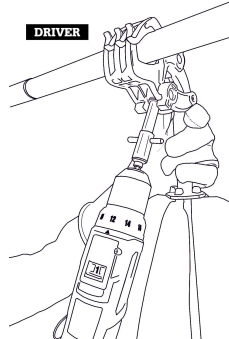
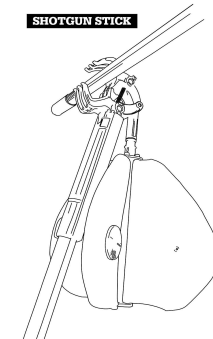
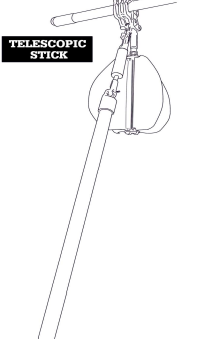
- 1) Insert "Peg A" (Fig.1) into "Hole A" (Fig.2)
- 2) Apply downward pressure to "Peg B" (Fig.1) to slightly curve fin and insert "Peg B" into "Hole B" (Fig.2)
- 3) Continue Steps 1 and 2 for remaining 3 Flags
- 4) Upon completion, ROTAMARKA[™] will look like Fig.3 and is ready to install onto Power line

2. General Spacing Recommendations

- 1) 30-100ft or 10-30m between Markers depending on application*
 - 2) Minimum of 1-2 Markers per span*
 - 3) For specific spacing recommendations for the ROTAMARKA[™] series, see the Science Sheet
- *May vary depending on environmental conditions, particular application and engineering considerations



3. Installation Options

<p>SCREWDRIVER</p>  <p>Includes use of Balmoral item WMDT; Suitable for both Eye Ring and Bayonet style ROTAMARKA</p>	<p>DRIVER</p>  <p>Includes use of Balmoral item WMDT; Suitable for both Eye Ring and Bayonet style ROTAMARKA</p>	<p>SHOTGUN STICK</p>  <p>Only suitable for Eye Ring style ROTAMARKA</p>	<p>TELESCOPIC STICK</p>  <p>Includes use of Balmoral item LLCR-E; Suitable for Eye Ring style ROTAMARKA****</p>
---	--	--	---

* 2.9ft-lb/4Nm recommended tightening torque

** Speciality tools recommended for installation options pictured

*** Do not use impact drivers for tightening

**** Third party tools available for use with Telescopic Sticks and suitable for Bayonet style ROTAMARKA[™]



4. In Service Care

It is recommended that **BALMORAL™ ENGINEERING ROTAMARKA™** should be cared for in the following manner:

Storage:

It is desirable that ROTAMARKA™ are stored in a stable room temperature environment away from sharp objects, sunlight, ozone and steam.

Kept clear of oil-based products and hydrocarbon derivatives.

It is recommended that ROTAMARKA™ should be kept in a suitable storage device that ensures the above conditions.

Use:

Prior to each and every use, all ROTAMARKA™ products should be visually inspected for any defects. Please refer to section "Periodic Visual Inspection and Care".

Any item found to be defective should be removed from service.

See below "Inspection and Care" instructions for further directions on how to clean and inspect ROTAMARKA™.

Periodic Visual Inspection and Care:

It is recommended that where it is possible or practical to do so, that all ROTAMARKA™ products be periodically inspected, cleaned and then re-inspected.

To aid visual inspection, materials should be:

- Cleaned to remove grime and dirt which may otherwise hide potential defects.
- We recommend cleaning the products using either a mild detergent or Polywater® Rubber Goods
- Do not use any cleaning agents or chemicals on the bearing area.
- Any item found to be defective, should be removed from service.
- Defects may take the form of cracks, loose components or missing parts, please follow the steps below to check:
 - Check the soft jaws are intact;
 - Check the threaded rod is intact, clamps can be opened and closed smoothly;
 - Check the fins are not cracked or distorted and are in good operational condition;
 - Check the reflectors are fixed well on the fins without being loose;
 - Check the metal components for rust, distortion or chemical attack;
 - Inspect the fins spindle for cracks or distortion, ensure bearings are rotated freely.

For more product information please visit our website:

www.balmoralengineering.com

For video demonstration and instillation instructions:

<https://www.youtube.com/watch?v=QBRoKWqkccg>