

Compiled/Updated	LL
Approved	CD
Issued Date	5-6-26
Amendment	A3

Product Data Sheet - Substation & Switchboard Drapes

A range of PVC and EPDM drapes in an array of sizes to assist electrical workers when screening potentially live conductors.

Key Features:

- Conforms with AS 4202.
- 650v electrical rating.
- Available in PVC or EPDM rubber.
- PVC comes as a dual layer yellow/grey visual indicator of wear.
- EPDM rubber comes as a dual layer yellow/blue visual indicator of wear.
- PVC excels as a durable, hard wearing and easier to clean material.
- EPDM excels as a more flexible, temperature stable material.
- PVC typically comes with studs or magnetic fasteners.
- EPDM typically comes with Velcro fasteners.
- Pegs or clamps can also be used to easily hold vertical sheets.

Figure 1
Y/G PVC
cut to size

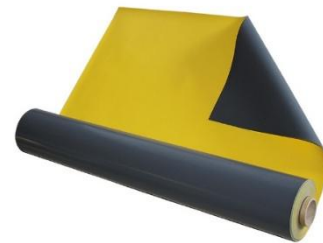


Figure 2
Y/B EPDM
cut to size



Scan for instructions



Part description:

Mats and covers

Compiled/Updated	LL
Approved	CD
Issued Date	5-6-26
Amendment	A3

Part No. Table (A)

<u>Part No.</u>	<u>Description</u>
9001	12m x 1.2 x 2mm PVC Y/G 650V AS4202 (Cut to size)
9007	LV Substation Drape-600x450-Plain-PVC-Y/G-650V
9008	LV Substation Drape-400x300-Plain-PVC-Y/G-650V
9019	LV Substation Drape-1.2x900-Plain-PVC-Y/G-650V
10005	LV Substation Drape-600x450-Eye/Mag-PVC-Y/G-650V
10006	LV Substation Drape-1.2x600-Eye/Mag-PVC-Y/G-650V AS4202
10020	LV Substation Drape-900 x 900-Eyelets -PVC-Y/G-650V AS4202
10021	LV Substation-2mx600-Magnets-PVC-Y/G-650V AS4202
10024	LV Substation Drape-2mt x 1mt Mag-PVC-Y/G=650V AS4202
10025	LV Substation Drape-450x315-Mag/Eye-PVC-Y/G-650V
10026	LV Substation Drape-600x450-Mag/Eye-PVC-Y/G-650V
10027	LV Substation Drape-900x600-Mag/Eye-PVC-Y/G-650V
10028	LV Substation Drape-1800x900-Mag/Eye-PVC-Y/G-650V
10029	LV Substation Drape-775x450-Eye/Mag-PVC-Y/G-650V AS4202
10030	LV Substation Drape-1.2x775-Eye/Mag-PVC-Y/G-650V AS4202
10031	LV Substation Drape-2000x600-Mag-PVC-Clear-650V
10032	LV Substation Drape-900x600-Mag-PVC-Clear-650V
10038	LV Substation Drape-1200x400-Plain-PVC-Clear-650V
10039	LV Substation Drape-2000x1200x1.2-Plain-PVC-Y/G-650V
10040	LV Drape-900x900-Velcro EPDM Y/B-650V
10043	LV Substation Drape-700x450-Eye/Mag-PVC-Y/G-650V
10044	LV Substation Drape-1.2x700-Eye/Mag-PVC-Y/G-650V
9009	LV Substation Drape - Roll 12m x 1.2 x 2mm - EPDM Rubber -Y/B-650V AS4202 (Cut to size)
9016	LV Substation Drape- 1m x 100 x 2mm Plain EPDM Rubber -Y/B-650V AS4202
9017	LV Substation Drape- 600 x 300 x 2mm Plain EPDM Rubber -Y/B-650V AS4202
9018	LV Substation Drape- 300m x 300 x 2mm Plain EPDM Rubber -Y/B-650V AS4202
10007	LV Substation Drape- 300 x 225 x2mm Eyelets EPDM Rubber -Y/B-650V AS4202
10008	LV Substation Drape- 450 x 300 x2mm Eyelets EPDM Rubber -Y/B-650V AS4202
10009	LV Substation Drape- 600 x 450 x2mm Eyelets EPDM Rubber -Y/B-650V AS4202
10010	LV Substation Drape- 900 x 600 x2mm Eyelets EPDM Rubber -Y/B-650V AS4202



Compiled/Updated	LL
Approved	CD
Issued Date	5-6-26
Amendment	A3

10011	LV Substation Drape- 1.8m x 900 x2mm Eyelets EPDM Rubber -Y/B-650V AS4202
10040	LV Drape- 900 x 900 x2mm -Velcro EPDM Rubber Y/B-650V AS4202

Dimensions and Materials Table (B)

Product	X (Length)	Y (Width)	Material	Class	Material Thickness
9001	Maximum of 12m	1200mm	Yellow/Grey Poly-Vinyl-Chloride (PVC)	CLASS II	2mm
9007	600mm	450mm			
9008	400mm	300mm			
9019	1200mm	900mm			
10005	600mm	450mm			
10006	1200mm	600mm			
10020	900mm	900mm			
10021	2000mm	600mm			
10024	2000mm	1000mm			
10025	450mm	315mm			
10026	600mm	450mm			
10027	800mm	600mm			
10028	1800mm	900mm			
10029	775mm	450mm			
10030	1200mm	775mm			
10031	2000mm	600mm	Clear (Poly-Vinyl-Chloride (PVC)	-	
10032	900mm	600mm			
10038	1200mm	400mm			
10039	200mm	1200mm	Yellow/Grey Poly-Vinyl-Chloride (PVC)	CLASS II	
10040	900mm	900mm			
10043	700mm	450mm			
10044	1200mm	700mm			

Compiled/Updated	LL
Approved	CD
Issued Date	5-6-26
Amendment	A3

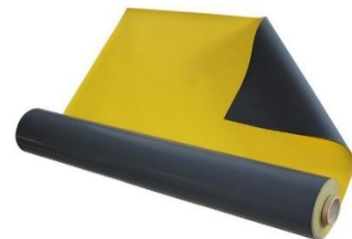
9009	Maximum of 12m	1200mm	Yellow / Blue Dual Layer Ethylene-propylene-Diene-Monomer (EPDM)	Class II	2mm
9016	1000mm	100mm			
9017	600mm	300mm			
9018	300mm	300mm			
10007	300mm	225mm			
10008	450mm	300mm			
10009	600mm	450mm			
10010	900mm	600mm			
10011	1800mm	900mm			
10040	900mm	900mm			

Note: Any dimensions or weights figures are estimates only.

Markings Table (D)

Each unit is marked at a single location with the following information:

Standard the unit follows
Class
Voltage Rating
Date Of Manufacture (DOM)
Lot number
Item code



Ratings Table (E)

1	AS4202	All excluding 10031, 10032, 10038: Compliant	2	Testing on 120°C heated rod for 1 hour ^(a)	No adverse functional effect on unit
---	---------------	--	---	--	--------------------------------------

(a) Results obtained at Balmoral Engineering inhouse test lab for reference

Compiled/Updated	LL
Approved	CD
Issued Date	5-6-26
Amendment	A3

Disclaimer: BALMORAL ENGINEERING, ROTAMARKA, TIGER TAILS and BIRDFLAPPA are trademarks owned by Balmoral Engineering Pty Ltd. The information in this document or product specification is believed to be correct as of the date of issue and is subject to change without notice. This document should be read in conjunction with the applicable Instructions For Use (IFU) document. Data within Balmoral Engineering Product Data Sheet (PDS) may be subject to tolerances. These tolerances will be defined within the applicable PDS or made available on request. Results and output data in this data sheet are indicative of lab testing protocols and may vary in field applications or environments. BALMORAL ENGINEERING makes no guarantees, expressed or implied as to the merchantability or fitness for purpose. The products are only to be used and installed by industry certified personnel. If applicable, maximum test speeds should be endured by the Products for a limited time period no greater than those described in the lab protocols. Imperial system units of measure are approximations only and have been converted from the data originally recorded in the metric system. Performance of the device in extreme weather events or harsh environments is not warranted. If BALMORAL ENGINEERING sells any component of a product or kit, we make no representations or guarantees as to the serviceability of the actual product or kit into which the component is being added. Furthermore, it is recommended that any such addition to the kit is done by BALMORAL ENGINEERING. In relation to the Balmoral Engineering Visual Warning series of products, it should be noted that not all visual responses to the device are going to be similar or alike. As such, no guarantees can be given as to the products effectiveness. Given the variety of factors that can affect the use and application of a product, some of which are within the user's knowledge and control, it is essential that the user evaluate the product to determine whether it is fit for a particular purpose and suitable for the user's method of use or application. The purpose of this document is to provide a description of the product and/or guidance to the installation thereof. When installing Balmoral Engineering products, due consideration must be given to the user's training and practice methodologies including any requirements of the entity who owns the infrastructure onto which the BALMORAL ENGINEERING Product is being installed. This must take precedence over any guidance BALMORAL ENGINEERING may provide. Notwithstanding, that all the above guidelines are followed, the ultimate responsibility for installing and maintaining the product correctly is with the end user. BALMORAL ENGINEERING accepts no liability for consequential damage relating to wildfires or bushfires particularly in regard to incorrect installation. As service environments may differ markedly with each application, the level of care required may change and is solely the responsibility of the end user. Any product images displayed are representative only. The above data sheet is provided as an estimate of performance and life and is not a guarantee or warranty. © 2026, All Rights Reserved, Balmoral Engineering Pty Ltd.